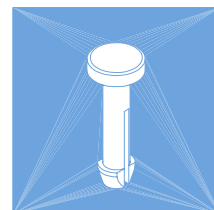


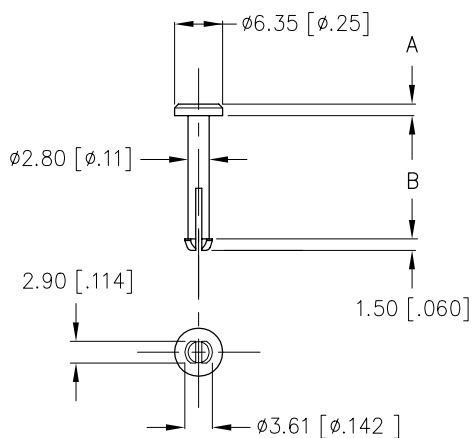
# ALPHA

# PIP3.175



THE PIP3.175 SERIES MOUNTS THE HEATSINK TO THE PCB USING A SPRING. OBTAINING ADEQUATE PRESSURE REQUIRED FOR THERMAL INTERFACE MATERIAL PERFORMANCE IS EASILY ATTAINED BY CHOOSING AN APPROPRIATE SPRING (NOT INCLUDED.).

DIM

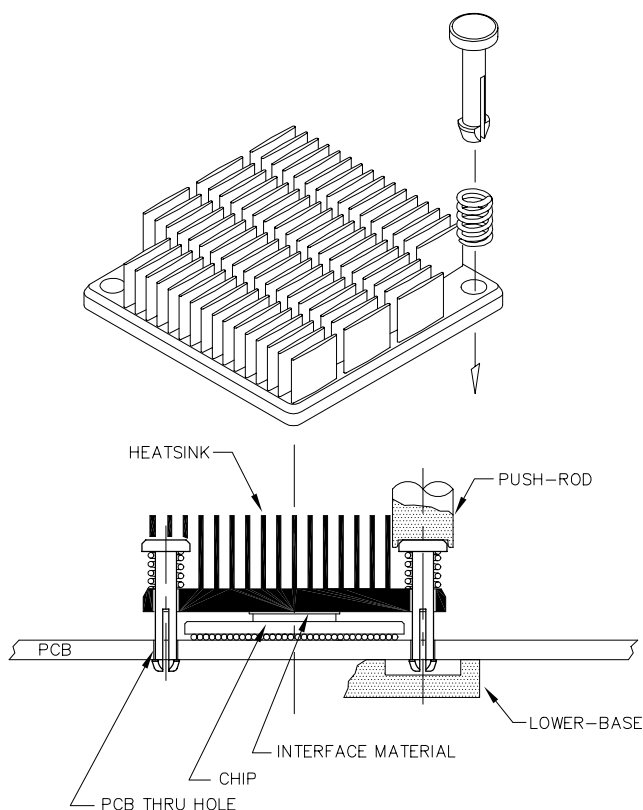


P/N	PART NAME	A	B
S001YZ1H	PIP3.175x8.5 [TH]	0.89 [.035]	8.50 [.335]
S001YZ10	PIP3.175x9.8 [TH]	1.27 [.050]	9.80 [.386]
S001YZ0T	PIP3.175x11 [TH]		11.00 [.433]
S001YZ0N	PIP3.175x11.5	1.55 [.061]	11.50 [.453]
S001YZ1P	PIP3.175x13.2		13.20 [.520]
S001YZ0M	PIP3.175x14.3		14.30 [.563]
S001YZ0Y	PIP3.175x18.8		18.80 [.740]
S001YZ0X	PIP3.175x20.3		20.30 [.799]

- MATERIAL : BRASS (ROHS COMPLIANT)  
C6801 SAN-ETU METALS BZ5  
OR EQUIVALENT
- DIMENSIONS mm [inch]

#### REFERENCES:

- HEATSINK:  
REQUIRES HEATSINK HOLE DIAMETER OF 3.45  
[.136] IF "PIP3.175 + SPRING" NEEDS TO BE  
CAPTIVE.
- BOARD:  
REQUIRES  $\phi 3.175 \pm 0.05$  [ $\phi .125 \pm .002$ ] THRU  
HOLES IN BOARD. USE OF PLATED HOLES TO  
REDUCE EXCESSIVE WEAR AND INSERTION FORCE IS  
RECOMMENDED.
- INSTALLATION:  
THE SPRING SHOULD NOT BE COMPRESSED TO  
SOLID LENGTH DURING INSTALLATION AND SHOULD  
BE SUPPORTED BY THE LOWER-BASE.  
PUSH-ROD AND LOWER-BASE NEEDS TO BE  
OBTAINED/PRODUCED LOCALLY.



FEB 2011

Alpha Company Ltd.

256-1 UEDA, NUMAZU-CITY SHIZUOKA-PREF., JAPAN  
PHONE +81(55)966 0789  
FAX +81(55)966 9192  
E mail : alpha@micforg.co.jp  
URL : <http://www.micforg.co.jp>

Alpha Novatech, Inc. - a subsidiary of Alpha Company.

473 Sapena Ct. #12 Santa Clara, CA 95054 USA  
PHONE +1(408)567-8082  
FAX +1(408)567-8053  
E mail : sales@alphanovatech.com  
URL : <http://www.alphanovatech.com>