

NR Series

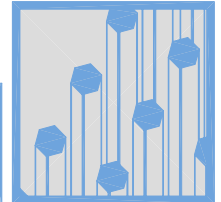
Natural Convection Heat Sink
with Mounting Tabs

ALPHA

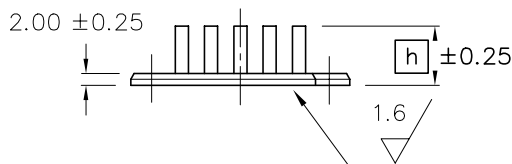
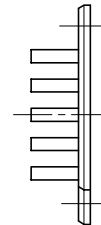
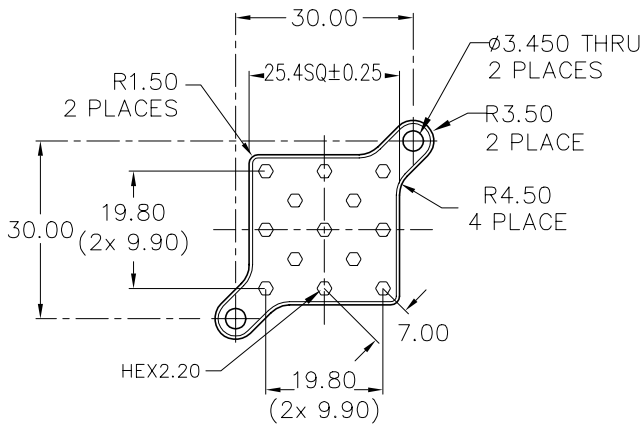
ALPHA

Natural Convection Heat Sink with Mounting Tabs

NR25



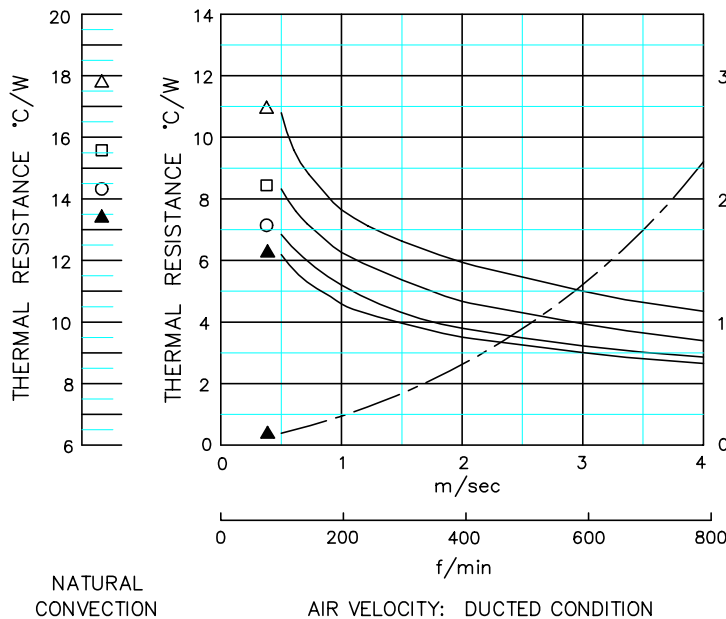
DIM



MATERIAL : A 6063
 FINISH : BLACK ANODIZE
 DIMENSIONS : mm

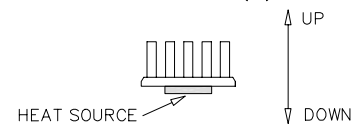
MODEL	HEIGHT [h]	WEIGHT (grams)
NR25-10B	10	5.1
NR25-15B	15	5.8
NR25-20B	20	6.5
NR25-25B	25	7.2

DATA



- △ NR25-10B
- NR25-15B
- NR25-20B
- ▲ NR25-25B

- DUCTED CONDITION
 DUMMY HEATER SIZE: 12.7 SQ
 THERMAL RESISTANCE ———
 PRESURE DROP - - - - -
- NATURAL CONVECTION
 DUMMY HEATER SIZE: 12.7 SQ
 DISSPATED POWER: 3.5(W)



NOTE ORIENTATION OF HEAT SINK USED FOR NATURAL CONVECTION TESTING

- BASED ON ALPHA'S STANDARD TEST PROCEDURE.
 REFER TO TECHNICAL INFORMATION.

Alpha Company Ltd.

256-1 UEDA, NUMAZU-CITY SHIZUOKA-PREF., JAPAN
 PHONE +81(55)966 0789
 FAX +81(55)966 9192
 E mail : alpha@micforg.co.jp
 URL : http://www.micforg.co.jp

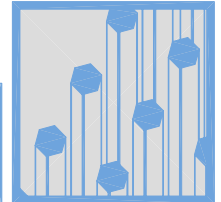
Alpha Novatech, Inc. - a subsidiary of Alpha Company.

473 Sapena Ct. #12 Santa Clara, CA 95054 USA
 PHONE +1(408)567-8082
 FAX +1(408)567-8053
 E mail : sales@alphanovatech.com
 URL : http://www.alphanovatech.com

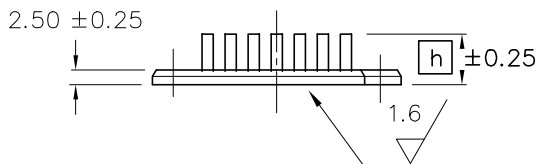
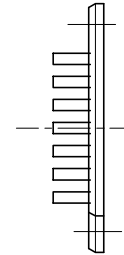
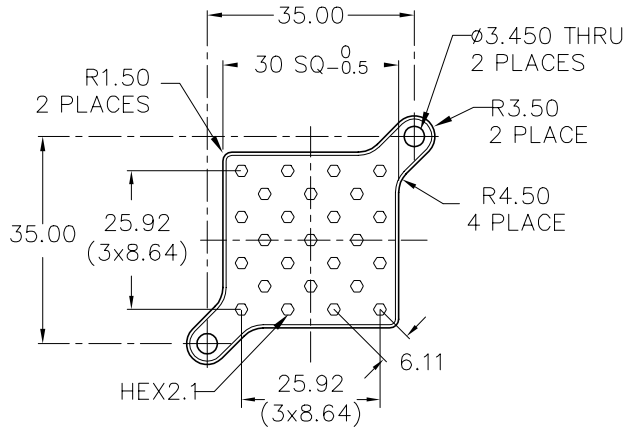
ALPHA

Natural Convection Heat Sink with Mounting Tabs

NR30



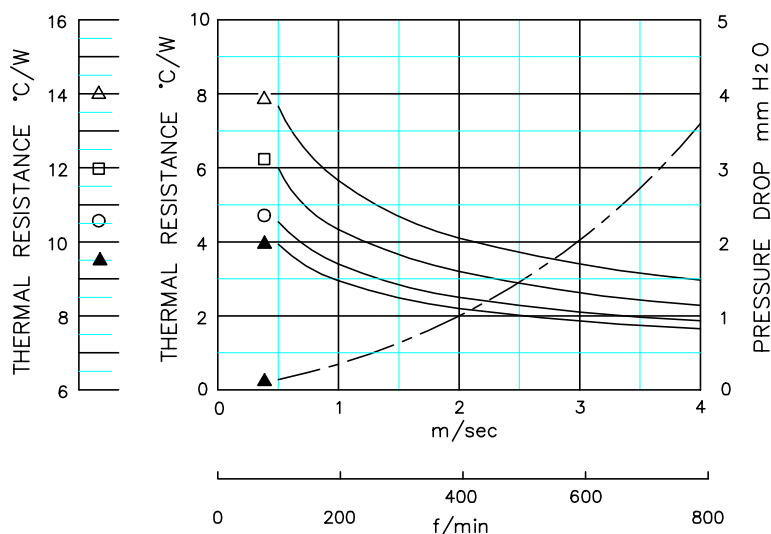
DIM



MATERIAL : A 6063
 FINISH : BLACK ANODIZE
 DIMENSIONS : mm

MODEL	HEIGHT h	WEIGHT (grams)
NR30-10B	10	8.4
NR30-15B	15	9.7
NR30-20B	20	11.0
NR30-25B	25	12.3

DATA



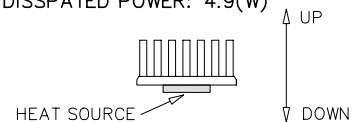
NATURAL CONVECTION

AIR VELOCITY: DUCTED CONDITION

- △ NR30-10B
- NR30-15B
- NR30-20B
- ▲ NR30-25B

● DUCTED CONDITION
 DUMMY HEATER SIZE: 12.7 SQ
 THERMAL RESISTANCE ———
 PRESURE DROP - - - - -

● NATURAL CONVECTION
 DUMMY HEATER SIZE: 12.7 SQ
 DISSIPATED POWER: 4.9(W)



NOTE ORIENTATION OF HEAT SINK USED FOR NATURAL CONVECTION TESTING

■ BASED ON ALPHA'S STANDARD TEST PROCEDURE.
 REFER TO TECHNICAL INFORMATION.

Alpha Company Ltd.

256-1 UEDA, NUMAZU-CITY SHIZUOKA-PREF., JAPAN
 PHONE +81(55)966 0789
 FAX +81(55)966 9192
 E mail : alpha@micforg.co.jp
 URL : http://www.micforg.co.jp

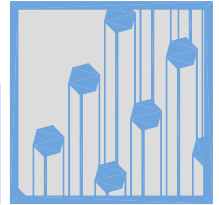
Alpha Novatech, Inc. - a subsidiary of Alpha Company.

473 Sapena Ct. #12 Santa Clara, CA 95054 USA
 PHONE +1(408)567-8082
 FAX +1(408)567-8053
 E mail : sales@alphanovatech.com
 URL : http://www.alphanovatech.com

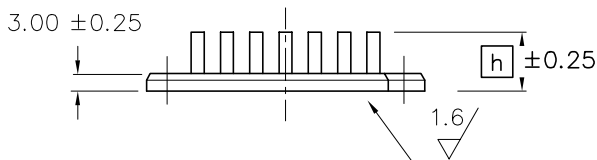
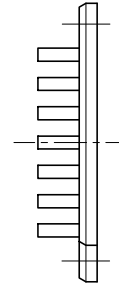
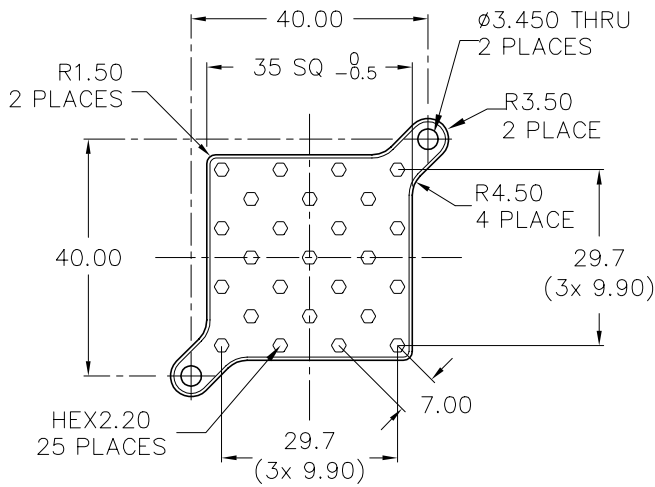
ALPHA

Natural Convection Heat Sink with Mounting Tabs

NR35



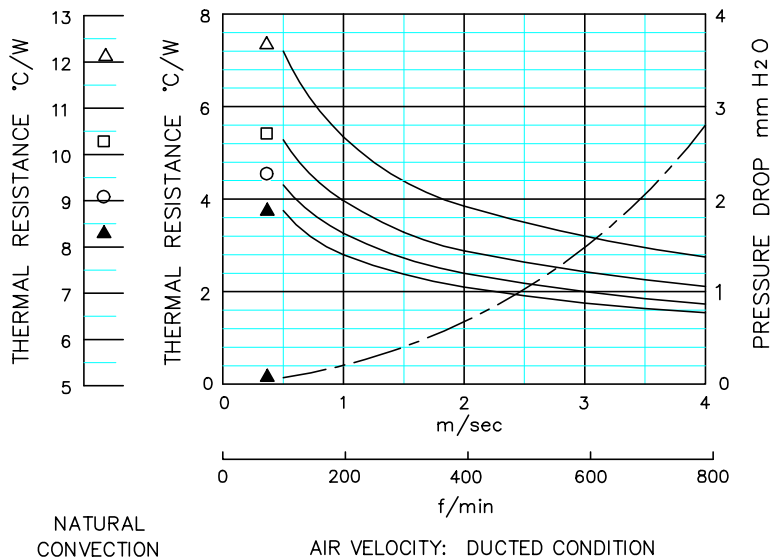
DIM



MATERIAL : A 6063
 FINISH : BLACK ANODIZE
 DIMENSIONS : mm

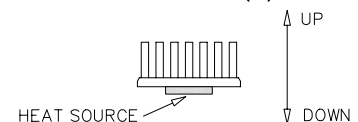
MODEL	HEIGHT h	WEIGHT (grams)
NR35-10B	10	12.4
NR35-15B	15	13.8
NR35-20B	20	15.2
NR35-25B	25	16.6

DATA



- △ NR35-10B
- NR35-15B
- NR35-20B
- ▲ NR35-25B

- DUCTED CONDITION
 DUMMY HEATER SIZE: 12.7 SQ
 THERMAL RESISTANCE ———
 PRESSURE DROP - - - -
- NATURAL CONVECTION
 DUMMY HEATER SIZE: 12.7 SQ
 DISSIPATED POWER: 5.7(W)



NOTE ORIENTATION OF HEAT SINK USED FOR NATURAL CONVECTION TESTING

- BASED ON ALPHA'S STANDARD TEST PROCEDURE.
 REFER TO TECHNICAL INFORMATION.

Alpha Company Ltd.

256-1 UEDA, NUMAZU-CITY SHIZUOKA-PREF., JAPAN
 PHONE +81(55)966 0789
 FAX +81(55)966 9192
 E mail : alpha@micforg.co.jp
 URL : http://www.micforg.co.jp

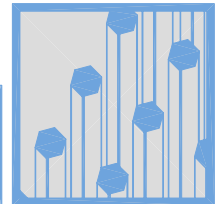
Alpha Novatech, Inc. - a subsidiary of Alpha Company.

473 Sapena Ct. #12 Santa Clara, CA 95054 USA
 PHONE +1(408)567-8082
 FAX +1(408)567-8053
 E mail : sales@alphanovatech.com
 URL : http://www.alphanovatech.com

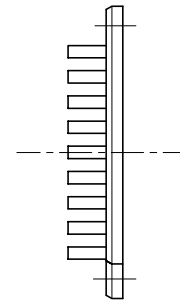
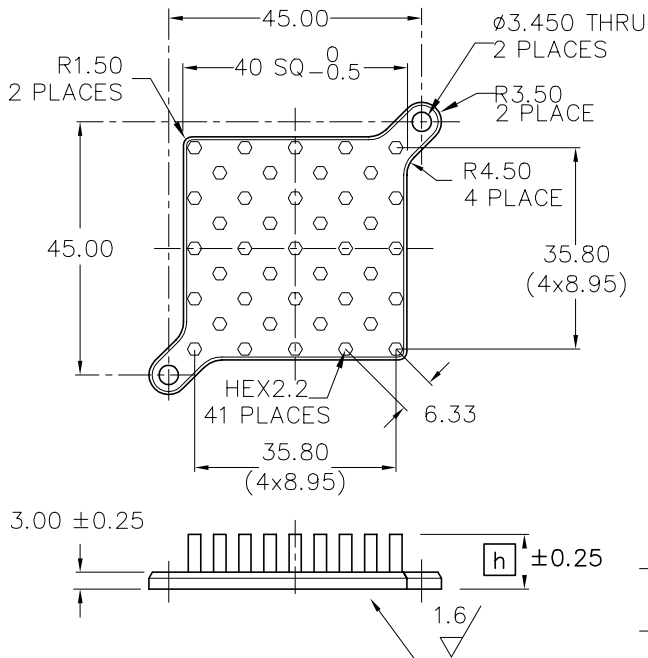
ALPHA

Natural Convection Heat Sink with Mounting Tabs

NR 40



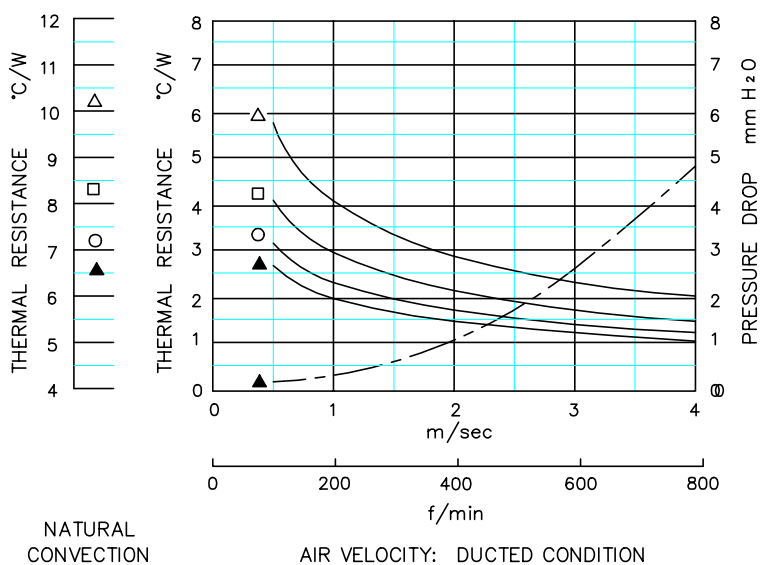
DIM



MATERIAL : A 6063
 FINISH : BLACK ANODIZE
 DIMENSIONS : mm

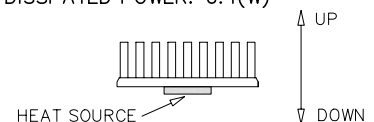
MODEL	HEIGHT h	WEIGHT (grams)
NR40-10B	10	17.1
NR40-15B	15	19.3
NR40-20B	20	21.5
NR40-25B	25	23.7

DATA



- △ NR40-10B
- NR40-15B
- NR40-20B
- ▲ NR40-25B

- DUCTED CONDITION
 DUMMY HEATER SIZE: 12.7 SQ
 THERMAL RESISTANCE _____
 PRESSURE DROP - - - - -
- NATURAL CONVECTION
 DUMMY HEATER SIZE: 12.7 SQ
 DISSIPATED POWER: 6.4(W)



NOTE ORIENTATION OF HEAT SINK USED FOR NATURAL CONVECTION TESTING

- BASED ON ALPHA'S STANDARD TEST PROCEDURE.
 REFER TO TECHNICAL INFORMATION.

Alpha Company Ltd.

256-1 UEDA, NUMAZU-CITY SHIZUOKA-PREF., JAPAN
 PHONE +81(55)966 0789
 FAX +81(55)966 9192
 E mail : alpha@micforg.co.jp
 URL : http://www.micforg.co.jp

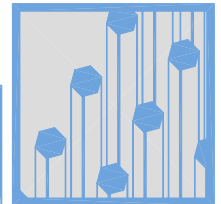
Alpha Novatech, Inc. - a subsidiary of Alpha Company.

473 Sapena Ct. #12 Santa Clara, CA 95054 USA
 PHONE +1(408)567-8082
 FAX +1(408)567-8053
 E mail : sales@alphanovatech.com
 URL : http://www.alphanovatech.com

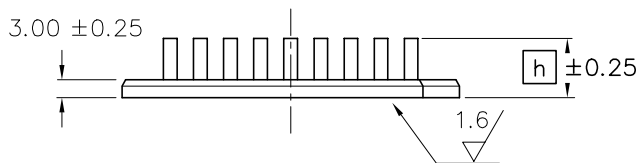
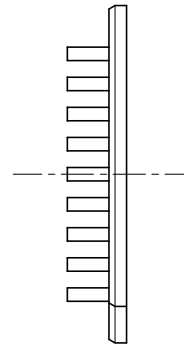
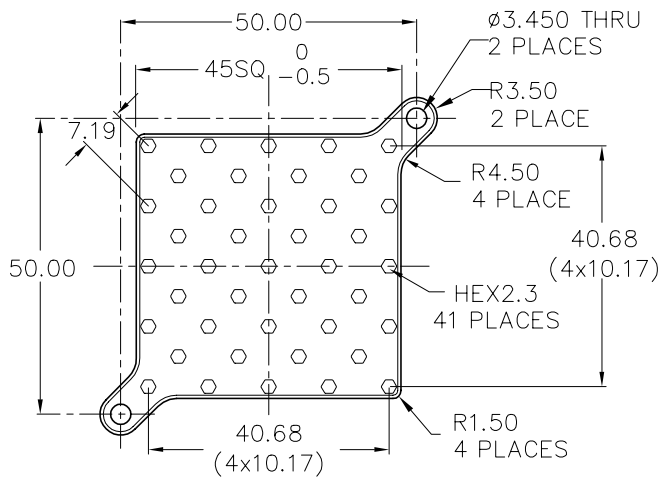
ALPHA

Natural Convection Heat Sink with Mounting Tabs

NR 45



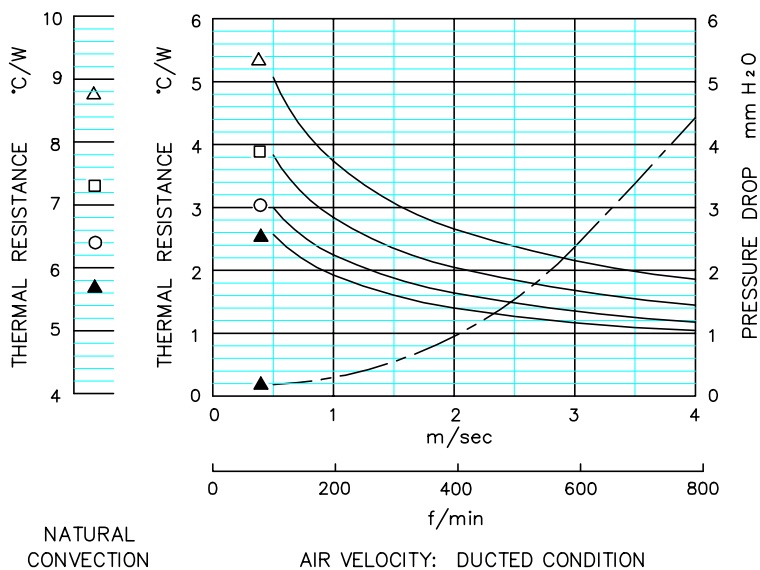
DIM



MATERIAL : A 6063
 FINISH : BLACK ANODIZE
 DIMENSIONS : mm

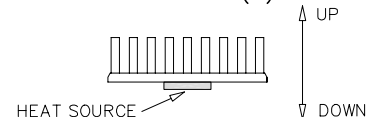
MODEL	HEIGHT [h]	WEIGHT (grams)
NR45-10B	10	21.0
NR45-15B	15	23.4
NR45-20B	20	25.8
NR45-25B	25	28.2

DATA



- △ NR45-10B
- NR45-15B
- NR45-20B
- ▲ NR45-25B

- DUCTED CONDITION
 DUMMY HEATER SIZE: 12.7 SQ
 THERMAL RESISTANCE _____
 PRESURE DROP - - - - -
- NATURAL CONVECTION
 DUMMY HEATER SIZE: 12.7 SQ
 DISSIPATED POWER: 8.0(W)



NOTE ORIENTATION OF HEAT SINK USED FOR NATURAL CONVECTION TESTING

- BASED ON ALPHA'S STANDARD TEST PROCEDURE.
 REFER TO TECHNICAL INFORMATION.

Alpha Company Ltd.

256-1 UEDA, NUMAZU-CITY SHIZUOKA-PREF., JAPAN
 PHONE +81(55)966 0789
 FAX +81(55)966 9192
 E mail : alpha@micforg.co.jp
 URL : http://www.micforg.co.jp

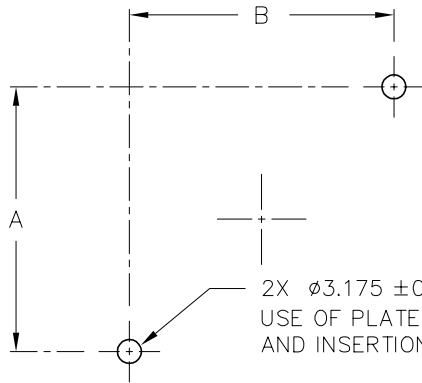
Alpha Novatech, Inc. - a subsidiary of Alpha Company.

473 Sapena Ct. #12 Santa Clara, CA 95054 USA
 PHONE +1(408)567-8082
 FAX +1(408)567-8053
 E mail : sales@alphanovatech.com
 URL : http://www.alphanovatech.com

REF



PCB HOLE LAYOUT



LPDR25, UBR25 AND NR25	30.0	30.0
LPDR30, UBR30 AND NR30	35.0	35.0
LPDR35, UBR35 AND NR35	40.0	40.0
LPDR40, UBR40 AND NR40	45.0	45.0
LPDR45, UBR45 AND NR45	50.0	50.0
MODEL	A	B

PUSH-IN-PIN CATALOG: <http://www.micforg.co.jp/dxf/PIP-3175.pdf>